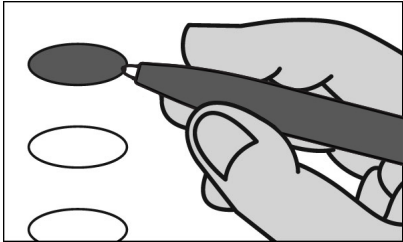


JOHNSTOWN - TWENTIETH WARD NO.2
OFFICIAL REPUBLICAN PRIMARY BALLOT
CAMBRIA COUNTY
APRIL 23, 2024



INSTRUCTIONS TO VOTER

- 1. TO VOTE YOU MUST BLACKEN THE OVAL (●) TO THE LEFT OF YOUR CHOICE COMPLETELY. An oval (●) blackened to the left of the name of any candidate indicates a vote for that candidate.
- 2. To cast a write-in vote for a person whose name is not on the ballot, you must blacken the oval (●) to the left of the line provided, and write the name in the blank space provided for that purpose.
- 3. Mark ballot only in black or blue ink. Use the same pen for all markings you place on the ballot.
- 4. If you make a mistake DO NOT ERASE OR CROSS OUT. Ask for a new ballot.

PRESIDENT OF THE UNITED STATES
VOTE FOR ONE

- ☐ NIKKI R. HALEY
- ☐ DONALD J. TRUMP
- ☐ Write-in _____

UNITED STATES SENATOR
VOTE FOR ONE

- ☐ DAVE MCCORMICK
ALLEGHENY COUNTY
- ☐ Write-in _____

ATTORNEY GENERAL
VOTE FOR ONE

- ☐ DAVE SUNDAY
YORK COUNTY
- ☐ CRAIG WILLIAMS
DELAWARE COUNTY
- ☐ Write-in _____

AUDITOR GENERAL
VOTE FOR ONE

- ☐ TIM DEFOOR
DAUPHIN COUNTY
- ☐ Write-in _____

STATE TREASURER
VOTE FOR ONE

- ☐ STACY GARRITY
BRADFORD COUNTY
- ☐ Write-in _____

REPRESENTATIVE IN CONGRESS
13TH DISTRICT
VOTE FOR ONE

- ☐ JOHN JOYCE
BLAIR COUNTY
- ☐ Write-in _____

SENATOR IN THE GENERAL ASSEMBLY
35TH DISTRICT
VOTE FOR ONE

- ☐ WAYNE LANGERHOLC, JR.
RICHLAND TOWNSHIP
- ☐ Write-in _____

REPRESENTATIVE IN THE GENERAL ASSEMBLY
72ND DISTRICT
VOTE FOR ONE

- ☐ AMY BRADLEY
WESTMONT BOROUGH
- ☐ Write-in _____

DELEGATE TO THE REPUBLICAN NATIONAL CONVENTION
13TH DISTRICT
VOTE FOR NOT MORE THAN THREE

- ☐ ERICH E. HAWBAKER
- ☐ BILL WARD, JR.
- ☐ C. ARNOLD
- ☐ STEVEN CARROLL, JR.
- ☐ JUANITA MILLER
- ☐ JIM FREEMAN
- ☐ JIM WASILKO
- ☐ Write-in _____

ALTERNATE DELEGATE TO THE REPUBLICAN NATIONAL CONVENTION
13TH DISTRICT
VOTE FOR NOT MORE THAN THREE

- ☐ LINDA L. MCCLURE
- ☐ JUDY WARD
- ☐ Write-in _____
- ☐ Write-in _____
- ☐ Write-in _____

YOU HAVE NOW COMPLETED VOTING
CAMBRIA COUNTY BOARD OF ELECTIONS

[Signature]
[Signature]
[Signature]

WARNING

If you receive an absentee or mail-in ballot and return your voted ballot by the deadline, you may not vote at your polling place on election day. If you are unable to return your voted absentee or mail-in ballot by the deadline, you may only vote a provisional ballot at your polling place on election day, unless you surrender your absentee or mail-in ballot and envelope to the judge of elections to be voided to vote by regular ballot.