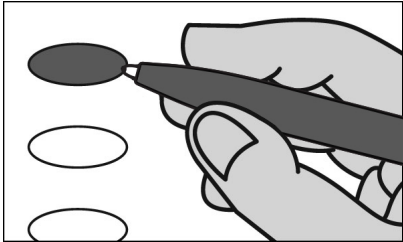


JOHNSTOWN - OLD CONEMAUGH/WOODVALE

OFFICIAL REPUBLICAN PRIMARY BALLOT

CAMBRIA COUNTY

APRIL 23, 2024



INSTRUCTIONS TO VOTER

1. TO VOTE YOU MUST BLACKEN THE OVAL (●) TO THE LEFT OF YOUR CHOICE COMPLETELY. An oval (●) blackened to the left of the name of any candidate indicates a vote for that candidate.
2. To cast a write-in vote for a person whose name is not on the ballot, you must blacken the oval (●) to the left of the line provided, and write the name in the blank space provided for that purpose.
3. Mark ballot only in black or blue ink. Use the same pen for all markings you place on the ballot.
4. If you make a mistake DO NOT ERASE OR CROSS OUT. Ask for a new ballot.

**AUDITOR GENERAL
VOTE FOR ONE**

- TIM DEFOOR**
DAUPHIN COUNTY
- Write-in _____

**STATE TREASURER
VOTE FOR ONE**

- STACY GARRITY**
BRADFORD COUNTY
- Write-in _____

**REPRESENTATIVE IN CONGRESS
13TH DISTRICT
VOTE FOR ONE**

- JOHN JOYCE**
BLAIR COUNTY
- Write-in _____

**SENATOR IN THE GENERAL
ASSEMBLY
35TH DISTRICT
VOTE FOR ONE**

- WAYNE LANGERHOLC, JR.**
RICHLAND TOWNSHIP
- Write-in _____

**REPRESENTATIVE IN THE GENERAL
ASSEMBLY
72ND DISTRICT
VOTE FOR ONE**

- AMY BRADLEY**
WESTMONT BOROUGH
- Write-in _____

**DELEGATE TO THE REPUBLICAN
NATIONAL CONVENTION
13TH DISTRICT
VOTE FOR NOT MORE THAN THREE**

- ERICH E. HAWBAKER**
- BILL WARD, JR.**
- C. ARNOLD**
- STEVEN CARROLL, JR.**
- JUANITA MILLER**
- NIM FREEMAN**
- JIM MASILKO**

Write-in _____

Write-in _____

Write-in _____

**ALTERNATE DELEGATE TO THE
REPUBLICAN NATIONAL
CONVENTION
13TH DISTRICT
VOTE FOR NOT MORE THAN THREE**

- LINDA L. MCCLURE**
- JUDY WARD**
- Write-in _____

Write-in _____

Write-in _____

**YOU HAVE NOW COMPLETED
VOTING**

**CAMBRIA COUNTY BOARD OF
ELECTIONS**

Scott W. H. J.
Kevin Kager

WARNING

If you receive an absentee or mail-in ballot and return your voted ballot by the deadline, you may not vote at your polling place on election day. If you are unable to return your voted absentee or mail-in ballot by the deadline, you may only vote a provisional ballot at your polling place on election day, unless you surrender your absentee or mail-in ballot and envelope to the judge of elections to be voided to vote by regular ballot.

**PRESIDENT OF THE UNITED STATES
VOTE FOR ONE**

- NIKKI R. HALEY**
- DONALD J. TRUMP**
- Write-in _____

**UNITED STATES SENATOR
VOTE FOR ONE**

- DAVE MCCORMICK**
ALLEY COUNTY
- Write-in _____

**ATTORNEY GENERAL
VOTE FOR ONE**

- DAVE SUNDAY**
YORK COUNTY
- CRAIG WILLIAMS**
DELAWARE COUNTY
- Write-in _____