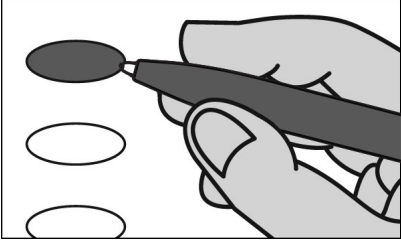


**BROWNSTOWN BOROUGH
OFFICIAL DEMOCRATIC PRIMARY BALLOT
CAMBRIA COUNTY
APRIL 23, 2024**



INSTRUCTIONS TO VOTER

1. TO VOTE YOU MUST BLACKEN THE OVAL (●) TO THE LEFT OF YOUR CHOICE COMPLETELY. An oval (●) blackened to the left of the name of any candidate indicates a vote for that candidate.
2. To cast a write-in vote for a person whose name is not on the ballot, you must blacken the oval (●) to the left of the line provided, and write the name in the blank space provided for that purpose.
3. Mark ballot only in black or blue ink. Use the same pen for all markings you place on the ballot.
4. If you make a mistake DO NOT ERASE OR CROSS OUT. Ask for a new ballot.

**PRESIDENT OF THE UNITED STATES
VOTE FOR ONE**

- JOSEPH R. BIDEN, JR.
- DEAN PHILLIPS
- Write-in _____

**UNITED STATES SENATOR
VOTE FOR ONE**

- ROBERT P. CASEY, JR.
LACKAWANNA COUNTY
- Write-in _____

**ATTORNEY GENERAL
VOTE FOR ONE**

- JACK STOLLSTEIMER
DELAWARE COUNTY
- EUGENE DEPASQUALE
ALLEGHENY COUNTY
- JOE KHAN
BUCKS COUNTY
- KEIR BRADFORD-GREY
PHILADELPHIA COUNTY
- JARED SOLOMON
PHILADELPHIA COUNTY
- Write-in _____

**AUDITOR GENERAL
VOTE FOR ONE**

- MALCOLM KENYAN
PHILADELPHIA COUNTY
- MARK PINSLE
LEHIGH COUNTY
- Write-in _____

**STATE TREASURER
VOTE FOR ONE**

- RYAN BIZZARRO
ERIE COUNTY
- ERIN MCCLELLAND
ALLEGHENY COUNTY
- Write-in _____

**REPRESENTATIVE IN CONGRESS
13TH DISTRICT
VOTE FOR ONE**

- BETH FARNHAM
ADAMS COUNTY
- Write-in _____

**SENATOR IN THE GENERAL
ASSEMBLY
35TH DISTRICT
VOTE FOR ONE**

- Write-in _____

**REPRESENTATIVE IN THE GENERAL
ASSEMBLY
72ND DISTRICT
VOTE FOR ONE**

- FRANK BURNS
EAST TAYLOR TOWNSHIP
- Write-in _____

**DELEGATE TO THE DEMOCRATIC
NATIONAL CONVENTION
13TH DISTRICT
VOTE FOR NOT MORE THAN THREE**

- MATTHEW A. GRIFFIN
COMMITTED TO JOSEPH BIDEN, JR.
- LISA KRAMER
COMMITTED TO JOSEPH R. BIDEN, JR.
- Write-in _____
- Write-in _____
- Write-in _____

**YOU HAVE NOW COMPLETED
VOTING**

**CAMBRIA COUNTY BOARD OF
ELECTIONS**

Scott W. H. J.
Kevin Kager
[Signature]

WARNING

If you receive an absentee or mail-in ballot and return your voted ballot by the deadline, you may not vote at your polling place on election day. If you are unable to return your voted absentee or mail-in ballot by the deadline, you may only vote a provisional ballot at your polling place on election day, unless you surrender your absentee or mail-in ballot and envelope to the judge of elections to be voided to vote by regular ballot.