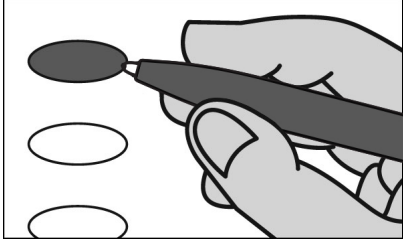


**CHEST SPRINGS BOROUGH**

**OFFICIAL GENERAL ELECTION BALLOT  
CAMBRIA COUNTY  
NOVEMBER 5th, 2024**



1. TO VOTE YOU MUST BLACKEN THE OVAL (●) TO THE LEFT OF YOUR CHOICE COMPLETELY. An oval (●) blackened to the left of the name of any candidate indicates a vote for that candidate.

2. To cast a write-in vote for a person whose name is not on the ballot, you must blacken the oval (●) to the left of the line provided, and write the name in the blank space provided for that purpose.

3. Mark ballot only in black or blue ink. Use the same pen for all markings you place on the ballot.

4. If you make a mistake DO NOT ERASE OR CROSS OUT. Ask for a new ballot.

**PRESIDENTIAL ELECTORS  
VOTE FOR THE CANDIDATES OF ONE PARTY FOR PRESIDENT AND VICE-PRESIDENT OR INSERT THE NAMES OF CANDIDATES**

- KAMALA D. HARRIS, PRESIDENT  
TIM WALZ, VICE-PRESIDENT**  
DEMOCRATIC
- DONALD J. TRUMP, PRESIDENT  
JD VANCE, VICE-PRESIDENT**  
REPUBLICAN
- CHASE OLIVER, PRESIDENT  
MIKE TER MAAT, VICE-PRESIDENT**  
LIBERTARIAN
- JILL STEIN, PRESIDENT  
RUDOLPH WARE, VICE-PRESIDENT**  
GREEN PARTY
- \_\_\_\_\_  
Write-in

**UNITED STATES SENATOR  
VOTE FOR ONE**

- ROBERT P. CASEY, JR.**  
DEMOCRATIC
- DAVE MCCORMICK**  
REPUBLICAN
- JOHN C. THOMAS**  
LIBERTARIAN
- LEILA HAZOU**  
GREEN PARTY
- MARTY SELKER**  
CONSTITUTION PARTY
- \_\_\_\_\_  
Write-in

**ATTORNEY GENERAL  
VOTE FOR ONE**

- EUGENE DEPASQUALE**  
DEMOCRATIC
- DAVE SUNDAY**  
REPUBLICAN
- ROBERT COWBURN**  
LIBERTARIAN
- RICHARD L. WEISS**  
GREEN PARTY
- JUSTIN L. MAGILL**  
CONSTITUTION PARTY
- ERIC L. SETTLE**  
FORWARD PARTY
- \_\_\_\_\_  
Write-in

**AUDITOR GENERAL  
VOTE FOR ONE**

- MALCOLM KENYATTA**  
DEMOCRATIC
- TIM DEFOOR**  
REPUBLICAN
- REECE SMITH**  
LIBERTARIAN
- ERIC K. ANTON**  
AMERICAN SOLIDARITY PARTY
- BOB GOODRICH**  
CONSTITUTION PARTY
- \_\_\_\_\_  
Write-in

**STATE TREASURER  
VOTE FOR ONE**

- ERIN MCCLELLAND**  
DEMOCRATIC
- STACY GARRITY**  
REPUBLICAN
- NICKOLAS CIESIELSKI**  
LIBERTARIAN
- TROY BOWMAN**  
CONSTITUTION PARTY
- CHRIS FOSTER**  
FORWARD PARTY
- \_\_\_\_\_  
Write-in

**REPRESENTATIVE IN CONGRESS  
13TH DISTRICT  
VOTE FOR ONE**

- BETH FARNHAM**  
DEMOCRATIC
- JOHN JOYCE**  
REPUBLICAN
- \_\_\_\_\_  
Write-in

**SENATOR IN THE GENERAL  
ASSEMBLY  
35TH DISTRICT  
VOTE FOR ONE**

- WAYNE LANGERHOLC, JR.**  
REPUBLICAN
- \_\_\_\_\_  
Write-in

**REPRESENTATIVE IN THE GENERAL  
ASSEMBLY  
71ST DISTRICT  
VOTE FOR ONE**

- JIM RIGBY**  
REPUBLICAN
- \_\_\_\_\_  
Write-in

**YOU HAVE NOW COMPLETED  
VOTING**

**CAMBRIA COUNTY  
BOARD OF ELECTIONS**

**WARNING**

If you receive an absentee or mail-in ballot and return your voted ballot by the deadline, you may not vote at your polling place on election day. If you are unable to return your voted absentee or mail-in ballot by the deadline, you may only vote a provisional ballot at your polling place on election day, unless you surrender your absentee or mail-in ballot and envelope to the judge of elections to be voided to vote by regular ballot.