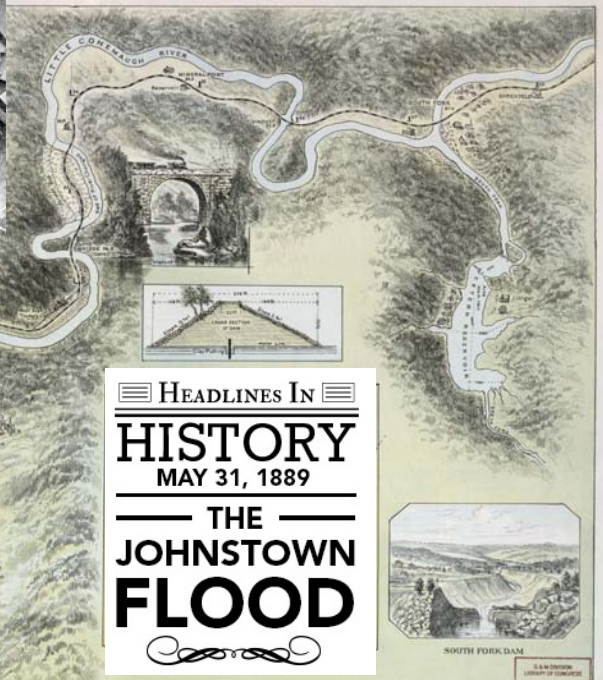


COUNTY OF CAMBRIA, PENNSYLVANIA

11TH ANNUAL EDITION

CITIZEN'S FINANCIAL REPORT

*The 130th anniversary of the
1889 Johnstown Flood*



FOR THE YEAR ENDED DECEMBER 31, 2018

PREPARED BY THE OFFICE OF THE CONTROLLER, ED CERNIC, JR.

A Message from the Controller

To The Residents of Cambria County:

Our Office has been producing this report to you for eleven years and we are pleased to report this year a positive unassigned fund balance of \$2,252,223 for the County. This is an increase from \$66,610 in 2017. This is the second year Cambria County Government has had a positive fund balance since 2011. Also, Cambria County has taken the unprecedented steps of reducing real estate taxes for the second year in a row by ½ mill which combined has saved taxpayers approximately \$1,200,000. These actions have proven the responsible manner in which the Commissioners have been operating the business aspects of the County.



As we are working into 2019, the County is preparing for a State mandate of new Election machines at a cost of over \$1 million, and totally rebuilding the 9-1-1 communication system that has an estimated cost ranging from \$15 - \$17 million. The Commissioners along with the staff in the Controller's Office and the 9-1-1 Operations are committed to completing this effort with no tax increase and a comprehensive coverage of communications throughout the County.

The Controller's Office is continuing to implement the OpenGov program to keep County Financial information more transparent to the public. The County's Transparency page may be found on the left side menu of the main Cambria County website. Additional financial reports are accessible on the Controller's Office page of the County website.

As always, none of this would be possible without my outstanding staff: Kristine Segear, First Deputy/Senior Accounting Manager; Dana Descavish, Second Deputy/Pension Benefits Health Care Administrator; Amber Hamilton and Emily Krug, Internal Auditors/Accountants; Sally Martin, Accounts Payable Coordinator; and Accounting Assistants Pam Paronish and the newest member of our staff, Robert Martin.

With All Best Wishes,

A handwritten signature in blue ink that reads "Ed Cernic, Jr." The signature is fluid and cursive.

Ed Cernic, Jr.
Cambria County Controller

Contact information:

Controllers Office:
Phone: (814) 472-1620
Fax: (814) 472-5358
Controller's email:
ecernic@co.cambria.pa.us

TABLE OF CONTENTS

Controller's Message.....	2	Vehicle Registration Fee.....	10
Welcome to Cambria County.....	3	Act 152 Demolition Fee.....	10
History of Municipalities.....	3	Corrections.....	10
General Obligation Debt.....	4	Liquid Fuels.....	11
Component Units.....	5	Retiring Elected Officials.....	12
Children & Youth, Juvenile Court & Detention/Shelter.....	5	2020 Census.....	12
Real Estate Taxes.....	6	Cambria County Retirement.....	13
Real Estate Properties.....	7	Health Care Costs.....	13
General Fund Rev and Exp.....	8	In the Spotlight.....	14
County Financial Position.....	8	Elected Officials.....	15
County Revenues and Expenses.....	9	Guide to County Government.....	16

WELCOME TO CAMBRIA COUNTY!

Cambria County, created on March 26, 1804, was the 41st County formed in PA and is nestled in the heart of the Allegheny Mountains. Cambria County is made up of 63 political subdivisions, consisting of the City of Johnstown, 32 boroughs and 30 townships with the Borough of Ebensburg being the County seat. In this publication as in previous publications, we will provide a brief history of two of Cambria County's boroughs and townships.

The County has a population of approximately 144,000, based on the 2010 Census, and covers 692 square miles. Cambria County is a 4th class County. Cambria County is home to 5 colleges and universities, 14 public school districts and many private and parochial schools, as well as many historic sites, state parks and local museums. The County currently has 640 full time and part time employees and 1,117 retirees.

History of Municipalities



Ebensburg Borough, the seat of Cambria County government, is situated on a plateau in the geographic center of the county along the eastern fringe of the Laurel Hill Ridge. Ebensburg originated in November 1796, when Congregational minister Rhees Lloyd led a small party of 20 Welsh people from Philadelphia to the lands Morgan John Rhees had chosen for his colony. They selected an attractive spot in the tops of the Allegheny Mountains and there settled what would become Ebensburg, naming it for Eben Lloyd, who died in childhood. Lloyd offered land to the government in exchange for Ebensburg becoming the county seat, which the government accepted. This mountain town was the hub of our young nation's last great push westward over the Appalachians. Early newspaper accounts describe High Street as being lined with Conestoga wagons and migrants staying in such early hostleries as the Berryhill Inn,

California House, Cambria House and the Mountain House. From its humble beginnings as the landing site of the Welsh advance party to its fame as a mountain spa, Ebensburg has enjoyed continuous prosperity while retaining its small town charm. For more information on Ebensburg Borough visit www.ebensburgpa.com.

PORTAGE TOWNSHIP

Portage Township was formed on March 4, 1878. It was comprised of land that was formerly Summerhill and Washington Township. Many of the settlements within the Township were founded as mining communities and Lumber company mills. The community of **Sonman** was named for the family of Arent Sonman, whose father was given 5,000 acres of land by the King of England for a debt that was owed him. "**German Settlement**" is known today as **Dutch Settlement**. It acquired its name from the Germans

mistakenly called Pennsylvania Dutch that settled this area. An elderly gentleman would go out into the green pastures of a section of the township to play his violin. This community soon became known as "**Fiddler's Green**". **Martindale** was named after the pioneer coal man, J.C. Martin. Martindale was first settled by Belgian, German, English, French, and Lithuanian immigrants that worked in the many local coal mines. **Moudy Hill**, **Chappell's Hill**, **Jamestown**, and **Timmerman Hill** were all named for early families that resided in that area. **Puritan** was named after the Puritan Coal Company. The following areas were also named for various companies: Redbird, Miller Shaft, Blue Bird, Jail Bird, and Shoemaker. **Guiguetown** was named for the pioneering Guigue family that settled in Portage Township. Mrs. Florentine Guigue, the former Florentine Guigue, traveling here from France in 1883, met a French sailor named John Castel. They married in Lilly and settled in Portage Township. Eventually her family also settled to the area. It was practice of farmers in a small community of the Township to set out salt blocks to attract deer to the area. The venison was used with pork in the making of the farmer's sausage. **Salts Blocks** was the name of this community comprised of a sawmill, a school, a store, and post office, as well as, at least 18 houses. **Benscreek** was named for Benjamin Earnest. For more information on Portage Township visit www.portagetwp.com.

General Obligation Debt

As of December 31, 2018, the County’s general obligation debt was \$42,654,180.

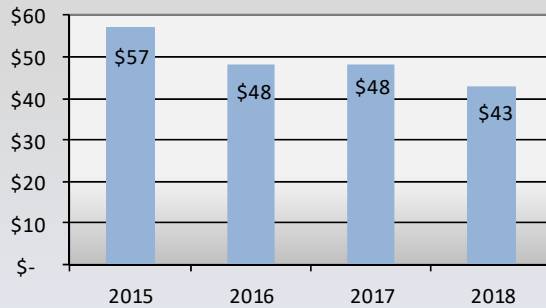
On November 7, 2017, S&P Global Ratings revised Cambria County's bond rating from negative to stable and affirmed its 'BBB' long-term rating on debt. The agency's revised outlook noted the recent improvement in the County's budgetary performance.

Taxpayer’s Debt Funding

The County designated 4 mills of tax to Debt Service in 2018.

Approximately \$5 million of Taxpayer’s dollars were used to fund the County’s Debt in 2018.

General Obligation Debt (In Millions)



The 2017 FNB Loan was issued for County capital improvement projects. In 2018, the County Prison improvement projects completed include new lighting, replacing geothermal equipment, installation of natural gas, conversion of hot water tank from electric to gas, ozone laundry system including washers and dryers, and roof repairs. Other County improvements completed include new lighting at the North Central Recreation Center in Ebensburg.

	2015	2016	2017	2018
04/05/08/09 Lease	401,542	360,331	317,956	271,811
2014 GO Bond	44,655,000	28,620,000	25,860,000	22,965,000
2015 Loan	11,696,916	-	-	-
2015 USDA Loan	96,787	78,311	59,226	39,510
2016 A&B GO Notes	-	19,210,000	19,175,000	19,145,000
2017 FNB Loan	-	-	3,000,000	232,859
	<u>\$ 56,850,245</u>	<u>\$ 48,268,642</u>	<u>\$ 48,412,182</u>	<u>\$ 42,654,180</u>



In May of 2018, the County's positive financial position allowed for the payoff of the entire \$10 million Tax Anticipation Note issued for 2018. This continued in 2019 with the County paying the entire \$10 million Tax Anticipation Note off in April 2019.

The Tax Anticipation Note (not included with the long term debt listed in the chart above) is issued annually every January by the County in order to finance current operations before the real estate tax revenues are collected. The real estate tax collections are then used to retire the debt in the same year.

Component Units of Cambria County

The following chart illustrates the amount of County Taxpayer Dollars spent to fund the Component Units:

	2015	2016	2017	2018
Penn Highlands Community College *	\$ 1,055,000	\$ 1,205,000	\$ 1,205,000	\$ 1,205,000
Cambria Library Association *	615,000	625,000	615,000	615,000
Transit Authority	577,463	597,087	644,841	788,877
Solid Waste Management Authority	338,700	340,700	340,700	340,700
Johnstown-Cambria County Airport	174,000	174,000	174,000	174,000
Conservation and Recreation Authority *	155,000	200,000	155,000	162,750
War Memorial Authority	150,000	318,000	182,000	182,000
Planning Commission	64,200	64,200	64,200	70,000
Redevelopment Authority	60,000	60,000	60,000	100,000
	\$ 3,189,363	\$ 3,583,987	\$ 3,440,741	\$ 3,638,327

State and/or Federal funds that are passed through Cambria County or released directly to the Component Unit are not included in the Chart above. Behavioral Health of Cambria County is not included in the chart above because their County funding is comprised of State pass-through funds only.

* In 2018, Cambria County designated 1 mill of tax for the Community College, 0.5 mills for the County Library, and 0.5 mills for Parks and Playgrounds. The dedicated tax for Parks and Playgrounds is distributed to the Conservation & Recreation Authority, War Memorial, North Central Recreational Center, and Duman Park.

Children & Youth, Juvenile Court, and Detention/Shelter

The chart below illustrates the amount of County Taxpayer Dollars provided to the Children & Youth, Juvenile Court, and Detention/Shelter Funds due to the excess expenditures over revenues for each year. The two final columns list the total 2018 expenditures and the percentage of County Taxpayer Dollars of the total expenditures for each fund.

	County Taxpayer Funding				2018	2018
	2015	2016	2017	2018	Total Fund Expenditures	County's Taxpayer %
Children & Youth	\$ 1,970,670	\$ 1,245,032	\$ 1,945,776	\$ 1,827,328	\$ 12,154,136	15.0%
Juvenile Court	1,712,707	1,972,637	1,745,922	1,742,971	3,164,884	55.1%
Detention/Shelter	809,202	610,433	-	-	-	0.0%
	\$ 4,492,579	\$ 3,828,102	\$ 3,691,698	\$ 3,570,299	\$ 15,319,020	

Children & Youth – The PA Department of Human Services provides the majority of the funding for this program to provide child protective services to the age of 21 through counseling, in-home, and residential services.

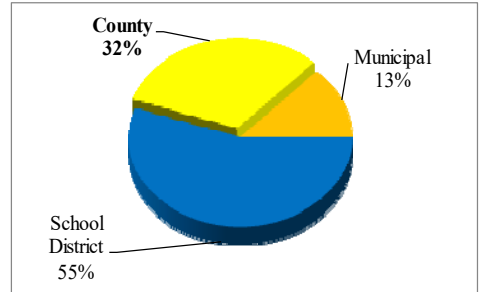
Juvenile Court – The PA Department of Human Services, PA Commission on Crime and Delinquency, and the Juvenile Court Judges Commission also provide funding to administer the entire Juvenile Court process.

Detention/Shelter – The Detention Home was a 24-hour maximum security facility for youth ages 10-18. Effective June 30, 2016, the County closed the Detention/Shelter facility. The decision to close the facility was due to the decreasing census and the increasing cost to the General Fund.

Your Real Estate Taxes — The County's Portion

By continuing to control spending in 2017, the Board of Commissioners were able to further reduce the County's millage to 33.5 mills in 2018. A Cambria County resident, in 2018, paid approximately \$1,054 in local real estate taxes which includes county, municipal and school district taxes on each \$10,000 of assessed property value. Of that, \$335 or 32% is paid to the County, as illustrated in the pie chart.

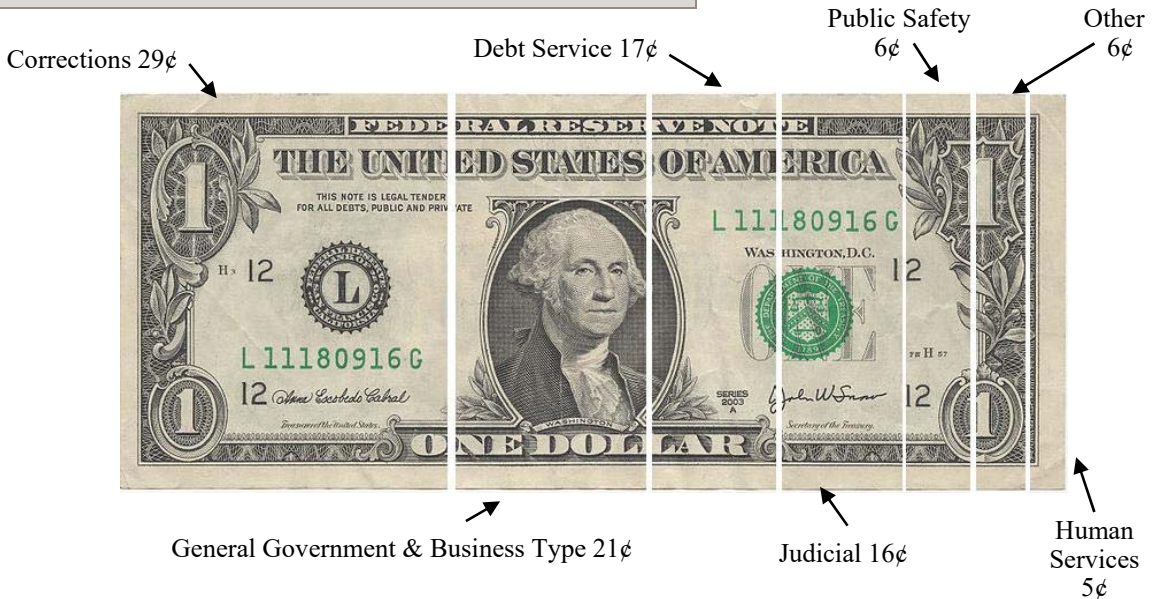
Each tax mill generates approximately \$1.26 million in tax revenue. On average, 93% of the County's real estate taxes are collected during the current tax year with a majority or 83% of the taxes collected during the discount period. At the end of 2018, approximately \$2.8 million (*at face*) or 6.83% in unpaid taxes were turned over to the County Tax Claim Bureau. During 2018, the Tax Claim Bureau collected \$2.4 million in delinquent taxes for tax years 2013 through 2017. During 2018, the County began billing interim taxes. Interim taxes result from new construction or improvements to an existing property that is completed before the next billing period. The County bills interims in March and July. During 2018, \$185,206 in additional tax revenue was collected.



The majority (71% or \$100.9 million) of the County's spending is funded by state and federal grants, charges for services, investments and other income. The remaining (\$41.5 million) must be paid primarily with your County real estate taxes.

	Millage Rates			
	2015	2016	2017	2018
General Purposes	23.500	27.500	27.500	27.500
Debt Service	4.000	5.000	4.500	4.000
Community College	1.000	1.000	1.000	1.000
County Library	0.500	0.500	0.500	0.500
Parks & Playgrounds	0.500	0.500	0.500	0.500
Total millage rates	<u>29.500</u>	<u>34.500</u>	<u>34.000</u>	<u>33.500</u>

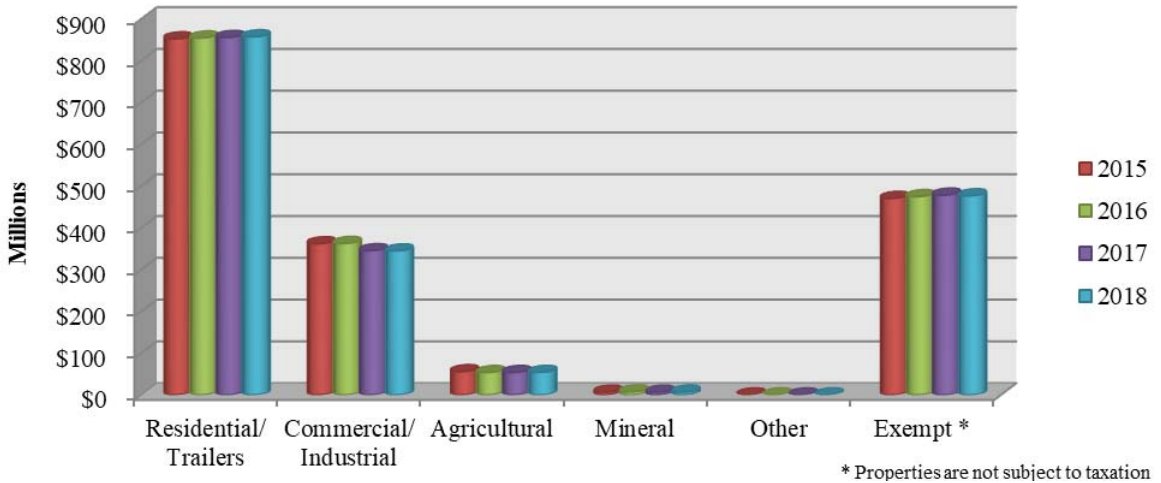
The dollar bill below illustrates how your County Real Estate dollars were spent in 2018.



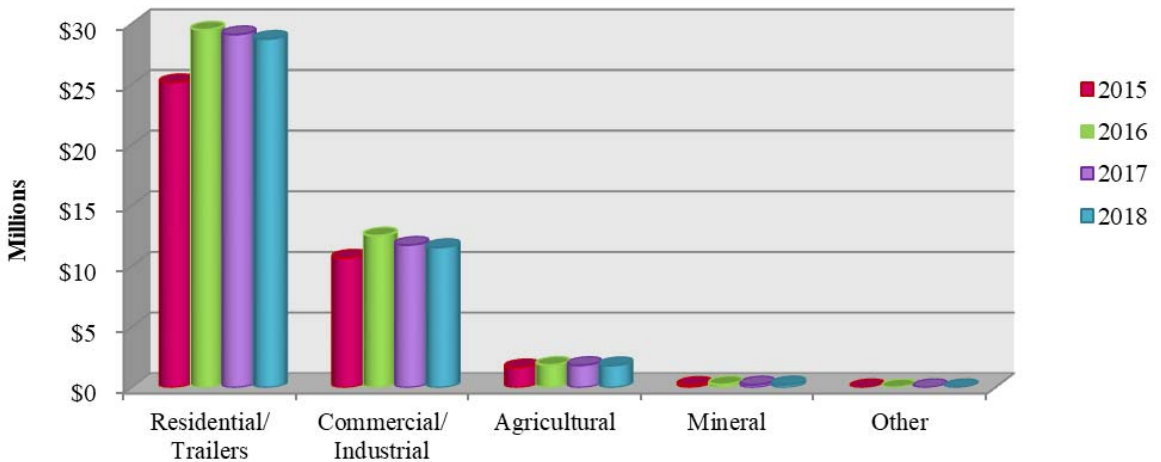
Real Estate Properties by Property Type

The following represents the total assessed value of Cambria County properties by type of property. The second chart shows the Real Estate Dollars billed by property type. The Cambria County Assessment Office maintains and updates property records for the valuation of real property for ad valorem taxation.

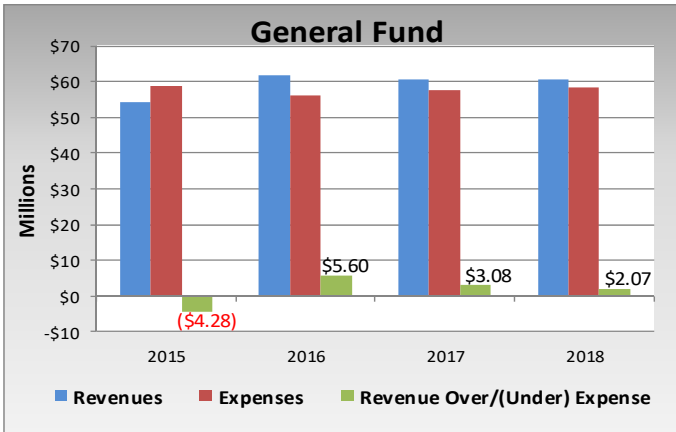
Assessed Value Comparison by Type (in Millions)



Real Estate Tax Dollars by Type (in Millions)



General Fund Revenues and Expenses



Cambria County 2018 State of the County Address

December 18, 2018



Photo courtesy of The Tribune Democrat

County Financial Position

The County's financial position, below, shows the County's resources versus the amount owed at year-end for the governmental and business type activities.

	<u>2015</u>	<u>2016</u>	<u>2017</u>	<u>2018</u>
Assets				
Current Assets				
Cash and investments	\$ 5,933,987	\$ 8,074,898	\$ 12,466,325	\$ 12,001,069
Other current assets	29,853,040	22,750,256	20,719,155	21,415,248
Capital assets and other	54,441,683	53,716,162	53,429,785	52,528,500
Total Assets	<u>90,228,710</u>	<u>84,541,316</u>	<u>86,615,265</u>	<u>85,944,817</u>
Deferred Outflows	<u>20,357,516</u>	<u>15,201,952</u>	<u>14,287,160</u>	<u>27,472,178</u>
Liabilities				
Current liabilities	42,049,458	26,072,425	25,708,921	22,765,726
Non-current liabilities	82,708,295	85,599,393	74,494,135	161,719,558
Total Liabilities	<u>124,757,753</u>	<u>111,671,818</u>	<u>100,203,056</u>	<u>184,485,284</u>
Deferred Inflows	<u>7,008,284</u>	<u>6,531,852</u>	<u>16,917,557</u>	<u>14,695,701</u>
Net Position	<u>\$ (21,179,811)</u>	<u>\$ (18,460,402)</u>	<u>\$ (16,218,188)</u>	<u>\$ (85,763,990)</u>

The significant decrease in Net Position in 2018 relates to the implementation of GASB Statement No.75, *Accounting and Financial Reporting for Postemployment Benefits other than Pensions*.

In 2018, a prior period adjustment of \$65,990,038 was made for the adoption of GASB 75. This amount is a projected amount of the unfunded liability of Other Post Employment Benefit (OPEB) payments, such as health insurance and life insurance for future retirees.

County Revenues and Expenses

The chart below illustrates a four year trend in the County's Revenues and Expenses.

Revenues	2015	2016	2017	2018
Taxes	\$ 36,852,124	\$ 42,791,935	\$ 42,072,399	\$ 41,497,091
Operating Grants & Contributions	74,226,232	83,995,053	84,678,869	87,790,104
Charges for Service	10,108,797	10,286,746	9,457,650	9,754,131
Interest & Investment Income	23,801	54,577	90,258	187,946
Reimbursed Expenses/Other Income	2,416,122	2,713,163	2,948,844	2,512,774
Total Revenues	123,627,076	139,841,474	139,248,020	141,742,046
Expenses				
Administrative	\$ 9,954,954	\$ 9,996,721	\$ 9,209,277	\$ 11,558,788
Judicial	12,430,916	11,624,372	11,975,860	11,933,834
Corrections	17,369,057	17,579,350	17,493,196	17,899,172
Public Safety	9,270,462	10,097,662	10,302,792	10,381,385
Debt Service	5,841,908	6,132,616	4,611,733	7,420,129
Human Service	67,656,709	74,347,837	74,621,068	76,468,178
Conservation	1,160,347	1,088,888	929,891	965,117
Housing	1,633,341	1,499,615	1,410,772	1,440,612
Highways/Streets	1,878,938	2,037,792	3,441,456	2,317,025
Culture/Recreation	1,352,485	1,185,358	1,208,239	1,235,815
Capital Projects	-	-	524,171	1,350,147
Total Expenses	128,549,117	135,590,211	135,728,455	142,970,202
Other Financing Sources/(Uses)	(56,995)	4,843,618	2,804,875	(98,598)
Net (Deficiency)/Excess	\$ (4,979,036)	\$ 9,094,881	\$ 6,324,440	\$ (1,326,754)

In 2018, Cambria County had a decrease in Tax revenue due to the .5 mill decrease in Real Estate Taxes and an increase in Operating Grants & Contributions due to the \$3.5 million increase in the amount of the State pass-through funds to Behavioral Health of Cambria County resulting in an overall increase in Revenues.

The \$3.5 million pass-through payments to Behavioral Health is also included in the increase of Expenses. The other significant increase in expenses relate to the repayment of the \$3 million Capital Improvement loan in which 12 of the 13 monthly payments were expensed in 2018.

For more information about County Revenues and Expenses, please visit our website at www.cambriacountypa.gov and click on the County Transparency link.

➔ **County Transparency**



Vehicle Registration Fee

On February 15, 2016, the County Commissioners adopted Ordinance No. 1 of 2016, implementing a county fee of \$5 for each non-exempt vehicle registered to a County resident. The \$5 vehicle registration fee was part of Act 89 of 2013, which was signed into law by Former Governor Tom Corbett on November 25, 2013. Act 89 established a fee for local use which allows County Commissioners to impose the fee beginning after December 31, 2014. Cambria County is among 24 of 67 other PA Counties to implement the fee. Within Cambria County, the monies collected from Act 89 are being used to rehabilitate and/or replace the County owned bridges. Cambria County owns 26 bridges. The County received \$618,205 in 2018. During 2018, the planning stages for the replacement of Chest Creek Bridge began and construction was completed on Cherry Bottom Bridge and Von Lunen Street Bridge. Look for the “Your Dollars at work” signs for projects funded with Act 89 dollars.

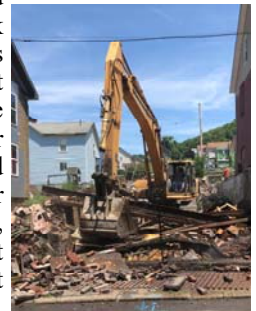


Act 152 - Demolition Fund



In 2016, Governor Wolf signed Act 152 enabling Counties to enact a fee on each deed and mortgage recorded by the County Recorder of Deeds Office. On January 26, 2017 the Cambria County Commissioners passed a Resolution establishing the Demolition Fund and setting the fee at \$15.00, effective March 1, 2017. In 2018 a total of \$103,797 was collected. During 2018, six blighted buildings were demolished for a total cost of \$62,097. The buildings included a commercial building and residential structure in South Fork Borough; a commercial building and two residential structures in the City of Johnstown; and a residential structure in West Taylor Township. In March 2019, demolition began on the

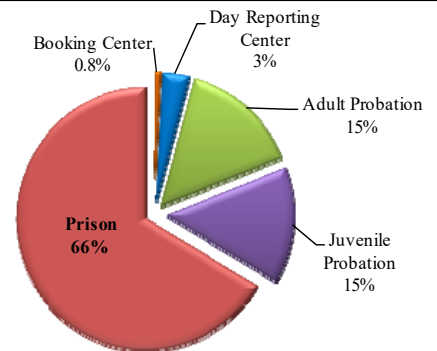
former Van Heusen shirt factory in Northern Cambria Borough. There are nine other properties located throughout Cambria County planned for 2019. Funds are distributed through the Cambria County Redevelopment Authority. For properties to qualify for participation in the program they must be in public ownership through a municipality, redevelopment authority, community development corporation, or public non-profit organization. An application for participation is available through the Redevelopment Authority.



County Corrections

As noted on page 6, County Corrections account for 29¢ of your County Real Estate tax dollar. County Corrections is made up of the Prison, Central Booking Center, Day Reporting Center, and Probation (*both Adult and Juvenile*).

For 2018, \$12 million of your County tax dollars were used to facilitate County Corrections. The pie chart shows a breakdown of each portion of County Corrections with the Prison accounting for a majority of the cost at 66% or \$7.98 million.



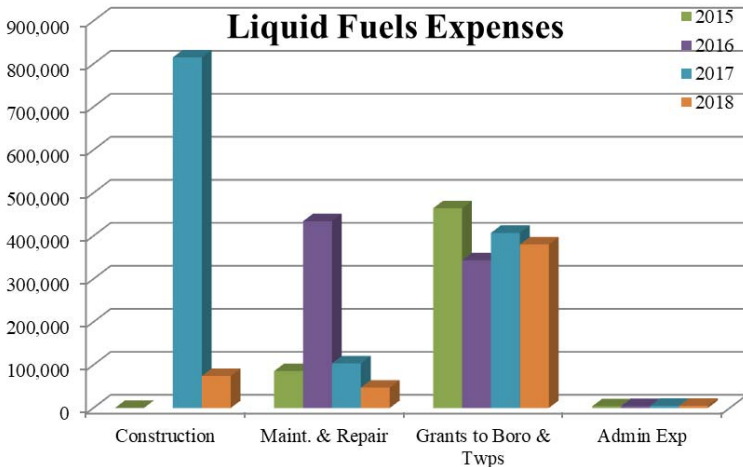
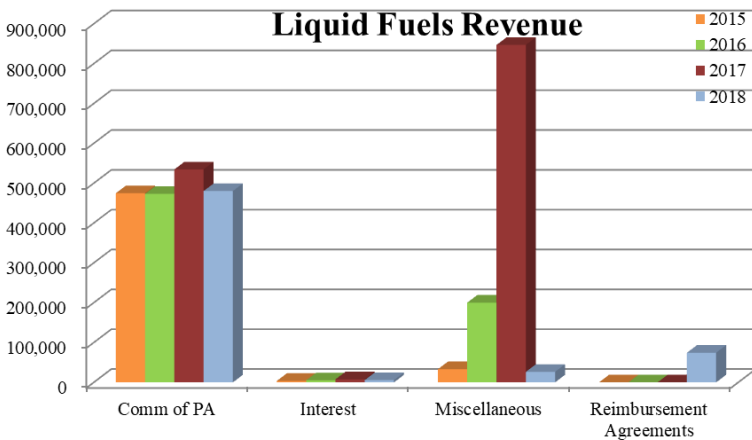
Liquid Fuels Fund

Cambria County receives grants from the State and Federal government to repair or replace County owned bridges. In addition, the County receives a portion of the overall State's liquid fuels tax. The County reallocates a portion of these amounts to all municipalities within Cambria County based upon their requests and the final decision of the County Commissioners. The remaining liquid fuels monies are used for bridge repair and maintenance. The large increase for 2016-2017 in miscellaneous revenue and construction expense in 2017 is due to the Wildwood Bridge repair project completed in 2018.



The list below shows the amount of funds paid to Municipalities in 2018:

Municipality	Amount Paid
Adams Twp	\$18,000
Allegheny Twp	21,400 *
Ashville Boro	3,400
Barr Twp	11,750
Blacklick Twp	7,600
Brownstown Boro	7,100
Cambria Twp	17,600
Carrolltown Boro	4,500
Chest Twp	4,000
Clearfield Twp	6,900
Cresson Boro	10,600 *
Cresson Twp	10,000
Croyle Twp	10,700
Dean Twp	8,400
East Carroll Twp	7,800
East Conemaugh Boro	4,900
Ehrenfeld Boro	3,800
Elder Twp	5,300
Ferndale Boro	8,200
Gallitzin Twp	15,900 *
Geistown Boro	14,600 *
Hastings Boro	5,300
Jackson Twp	13,800
Loretto Boro	6,500
Patton Borough	21,400 *
Portage Boro	21,300 *
Reade Twp	7,000
Richland Twp	26,400
Scalp Level Boro	4,400
Stonycreek Twp	8,300
Susquehanna Twp	10,400
Upper Yoder Boro	11,900
Washington Twp	5,400
West Carroll Twp	12,800 *
Westmont Boro	11,000
White Twp	12,000 *
Total Payments	\$380,350



*Municipality's payment includes allocations from multiple years.

Elected Officials Retiring - Thank you for your service



Mark Wissinger
Commissioner
Retirement Board
Trustee
 Elected Official
 3 Terms
 1992-1995 &
 2012-2019



Patty Sharbaugh
Register of Wills & Clerk
of Orphan's Court
 County Service 45 years
 Elected Official
 6 Terms
 1996-2019



Debbie Martella
Prothonotary
 County Service 47 years
 Elected Official
 2 Terms
 2012-2019



Susan Kuhar
Clerk of Courts
 County Service 42 years
 Elected Official
 5 Terms
 2000-2019

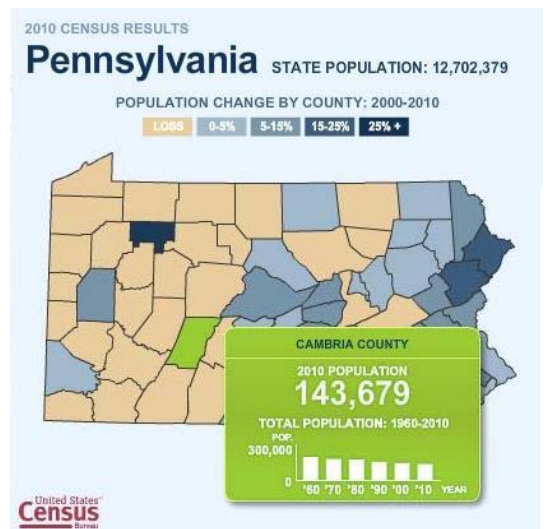
2020 Census

We need **EVERY** CAMBRIA COUNTY RESIDENT to be counted in the 2020 Census.

Why is it important for households to complete the 2020 Census?

Census Statistics are used:

- to determine the amount of funding Counties receive for Human Service Programs and the County class size.
- by Individuals, Businesses, and Organizations for planning and the decision making to open new businesses.
- by Communities for a variety of resident needs including new roads, schools, and emergency planning.
- to determine how many representatives Pennsylvania will have in Congress along with legislative redistricting.



New technology will be implemented for the 2020 Census to make responding easier!
 You will be able to respond online, by phone, as well as by mail.

Census postcards will be mailed out in March 2020.

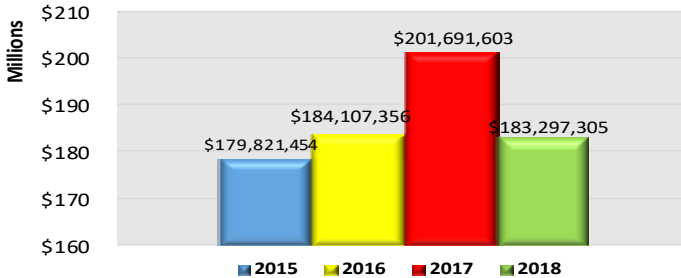
Reminder letters will be sent to the households that haven't responded. Census takers also visit non-respondents.

EVERY PERSON COUNTS !!

Cambria County Retirement

The graph represents the Retirement Fund Market Value at year end. As of December 31, 2018, market value was **\$183,297,305**. A complete report of the Employee Retirement Trust Plan is available on the County's website, www.cambriacountypa.gov, under the Retirement Board area or by contacting the Controller's Office.

Retirement Fund Market Value at year end 12/31



Pennsylvania Association of Public Employee Retirement Systems

Certified PA Public Retirement Plan Professional
Certificate of Completion

This is to acknowledge that

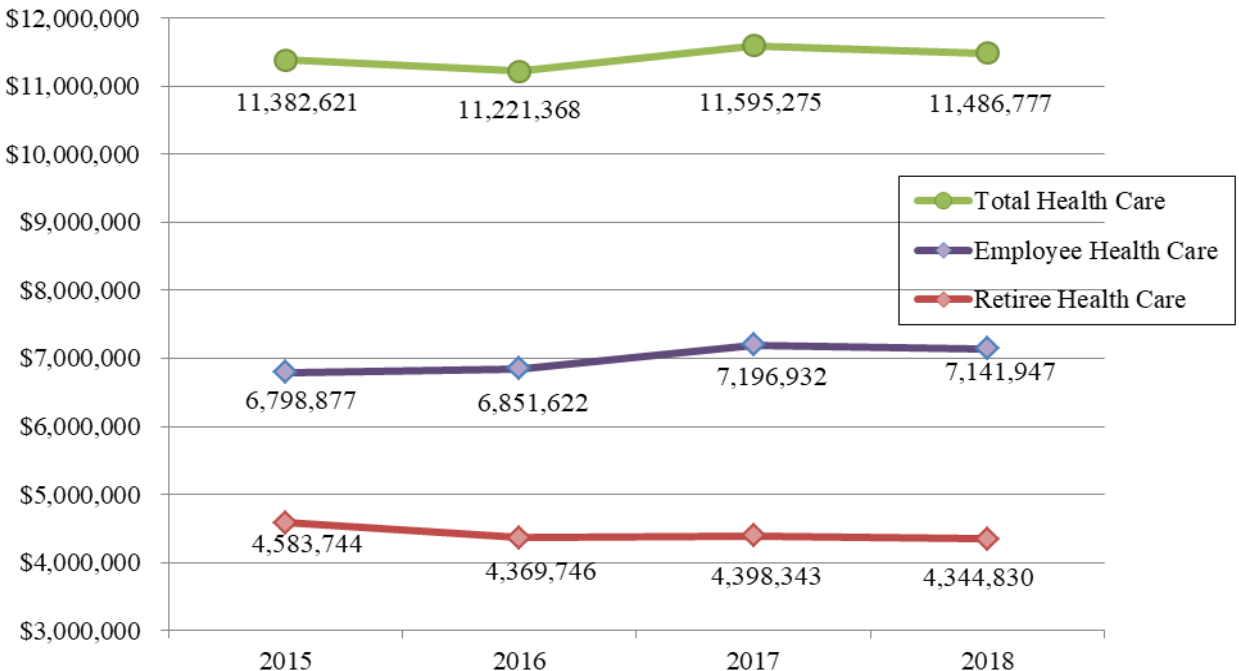
ED CERNIC

DANA DESCAVISH

has successfully completed training from
fi360, Inc., Parts 1 & 2
Fiduciary Essentials® for Papers, 2018

Health Care Costs

Since 2011, Cambria County has been self insured for health care using UPMC to administer the plan. The chart below shows the total health care costs and the breakout of employee health care and retiree health care.



In the Spotlight



Clerk of Courts

The Clerk of Courts Office is comprised of the Elected Official and ten full time employees.

The mission of the Clerk of Courts Office is to diligently serve the citizens and courts of Cambria County by keeping up-to-date accurate information and by maintaining the security and integrity of all adult criminal records entrusted to the Clerk of Courts Office. The office records all criminal court procedures, collects fines, costs, and restitution for the Court of Common Pleas.

Recognizing that the Clerk of Courts is an integral part of the criminal justice system, the office pledges to provide prompt, courteous, and professional service to all.

Susan M. Kuhar, the Clerk of Courts, has worked in the Office for 42 years, with the past 19 years as the **Clerk of Courts**. She is retiring at the end of her 5th term in 2019.



The Cambria County Treasurer's Office is comprised of the Elected Official and four full time employees. The Treasurer's Office has a range of duties which are unique in the Commonwealth. One function of the County Treasurer is to serve on the County Employee's Retirement Board to ensure member contributions are invested in a fiscally prudent manner for future retirements. The County Treasurer's Office serves as the repository for all monies remitted from the various county departments, with all funds kept separate and fully accounted for on a department-by-department basis. The total amount of monies which passes through the County Treasurer's Office during any given year approximates \$250 million. The following License applications are available at the Treasurer's Office —Small Games of Chance License, Dog License, Lifetime Dog License, Furtaker License, and Resident Senior Lifetime Fishing License. Applications can also be found online at www.cambriacountypa.gov. The Treasurer's Office is assigned the authority and responsibility to collect the Cambria County Lodging Room Rental Tax. These taxes are intended to benefit the Greater Johnstown/Cambria County Convention & Visitors Bureau and used to promote the tourism industry in Cambria County. The Treasurer's Office is also responsible for the collection of County Real Estate taxes for the City of Johnstown.

CAMBRIA COUNTY ELECTED OFFICIALS



Board of Commissioners

From left: Mark Wissinger, Thomas Chernisky, Chairman; and William "B.J." Smith, Vice-Chairman



Susan Kuhar, Clerk of Courts

Records all criminal court procedures, collects fines, costs, and restitution for the Court of Common Pleas.



Ed Cernic, Jr., Controller

Ensures the accuracy and legality of fiscal transactions, administers county pension fund, works with county tax collectors and constables, processes accounts payable.



Jeffrey Lees, Coroner

Investigates sudden, unexplained violent, or suspicious deaths occurring in the County.



Kelly Callihan, District Attorney

Chief Law Enforcement Officer of Cambria County. Oversees the investigation and prosecution of criminal activity occurring within the county.



Debbie Martella, Prothonotary

Keeper of Civil records for the courts, processes passports, and provides free public access to naturalization records from the early 1800s.



Ray Wendekier, Recorder of Deeds

Records all deeds, mortgages, and land related papers for County properties and collects PA realty transfer tax.



Patty Sharbaugh, Register of Wills & Clerk of Orphan's Court

Issuer of marriage licenses, records inheritance tax, adoptions, birth and death records, and wills and estates.



Robert Kolar, Sheriff

Responsible for security at County buildings; County law enforcement such as serving bench warrants and issues gun permits.



Lisa Kozorosky, Treasurer

Collects County Real Estate taxes for the City of Johnstown and lodging room rental tax. Issues dog, hunting, fishing, bingo, and small game of chance licenses.

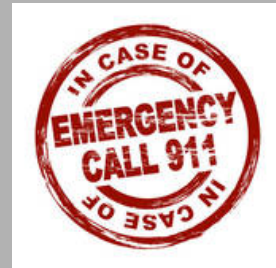
Guide to County Government

<u>Office</u>	<u>Official</u>	<u>Phone</u>	<u>Email</u>
Commissioner	Thomas Chernisky	(814) 472-1600	
Commissioner	William "B.J." Smith	(814) 472-1600	
Commissioner	Mark Wissinger	(814) 472-1600	
Controller	Ed Cernic, Jr.	(814) 472-1620	ecernic@co.cambria.pa.us
Clerk of Courts	Susan Kuhar	(814) 472-1540	skuhar@co.cambria.pa.us
Coroner	Jeffrey Lees	(814) 535-6222	lees@co.cambria.pa.us
District Attorney	Kelly Callihan	(814) 472-1680	
Prothonotary	Debbie Martella	(814) 472-1638	dmartella@co.cambria.pa.us
Recorder of Deeds	Ray Wendekier	(814) 472-1475	rwendekier@co.cambria.pa.us
Register of Wills	Patty Sharbaugh	(814) 472-1440	psharbaugh@co.cambria.pa.us
Sheriff	Robert Kolar	(814) 472-1690	sheriff@co.cambria.pa.us
Treasurer	Lisa Kozorosky	(814) 472-1643	lkozorosky@co.cambria.pa.us

24/7 Warrant Hotline	(814) 472-8395
-----------------------------	-----------------------

Push out the Pusher	1-800-548-7500
----------------------------	-----------------------

Crisis Intervention Hotline	1-877-268-9463
Area Agency on Aging	(814) 539-5595
Behavioral Health / Intellectual Disabilities / Early Intervention Program	(814) 535-8531
Children & Youth Services	(814) 539-7454
Drug & Alcohol	(814) 536-5388
Conservation District	(814) 472-2120
Cost & Fines	(814) 472-1551
Court Administrator	(814) 472-1552
Domestic Relations	1-800-638-4409
Duman Park	(814) 472-8390
Election Office	(814) 472-1460
Jury Selection Division	(814) 472-1501
Non-Emergency Number	(814) 472-2100
Tax Assessment Office	(814) 472-1451
Tax Claim Bureau	(814) 472-1445
Veteran Affairs	(814) 472-1590



Do you suspect Fraud or Abuse is occurring within Cambria County? Contact the Controller's Office.

Keep it confidential....

- Mail your tip to: The Controller's Office, 200 S Center St., Ebensburg, PA 15931
- Call (814) 472-1623

www.cambriacountypa.gov

Photos throughout the book courtesy of various public internet sources, unless noted.